



# 2017 ITC Women's Team (ALLENTOWN)

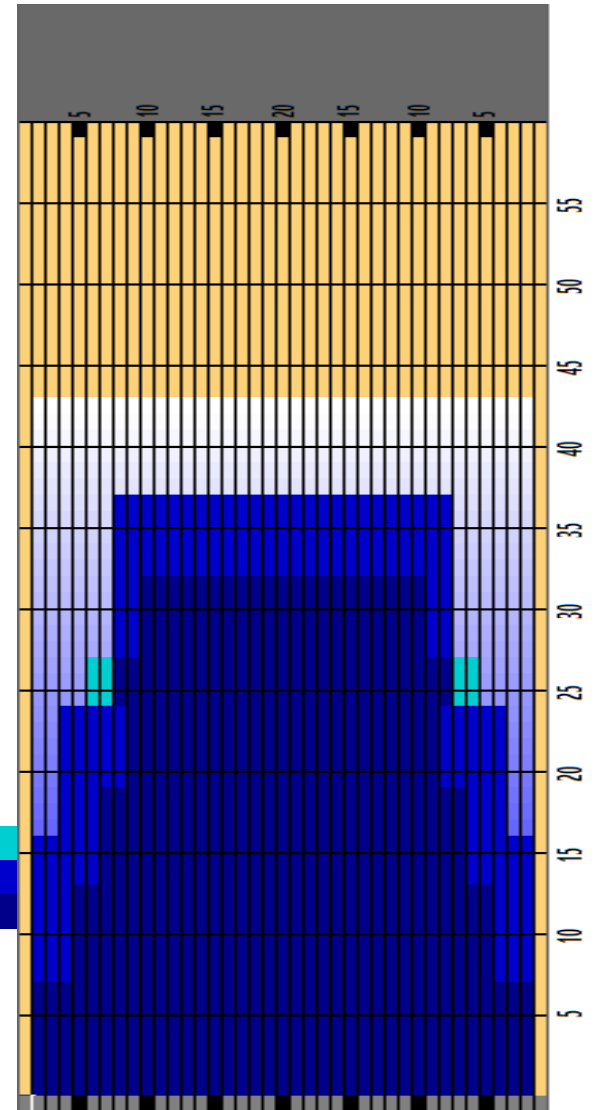


Oil Pattern Distance	43	Reverse Brush Drop	37	Oil Per Board	39 ul
Forward Oil Total	18.564 mL	Reverse Oil Total	8.385 mL	Volume Oil Total	26.949 mL
Tank Configuration	N/A	Tank A Conditioner	ICE	Tank B Conditioner	ICE

	START	STOP	LOADS	SPEED	BUFFER	TANK	CROSSED	START	END	FEET	T.OIL
1	2L	2R	5	14	3	A	185	0.0	7.9	7.9	7215
2	5L	5R	3	14	3	A	93	7.9	13.8	5.9	3627
3	7L	7R	3	14	3	A	81	13.8	19.7	5.9	3159
4	9L	9R	2	18	3	A	46	19.7	24.8	5.1	1794
5	6L	6R	1	18	3	A	29	24.8	27.3	2.5	1131
6	10L	10R	2	18	3	A	42	27.3	32.4	5.1	1638
7	2L	2R	0	18	3	A	0	32.4	43.0	10.6	0

	START	STOP	LOADS	SPEED	BUFFER	TANK	CROSSED	START	END	FEET	T.OIL
1	2L	2R	0	30	3	B	0	43.0	37.0	-6.0	0
2	8L	8R	3	30	3	B	75	37.0	24.3	-12.7	2925
3	4L	4R	2	30	3	B	66	24.3	15.8	-8.5	2574
4	2L	2R	2	30	3	B	74	15.8	7.3	-8.5	2886
5	2L	2R	0	10	3	B	0	7.3	0.0	-7.3	0

Cleaner Ratio Main Mix NA Forward  
 Cleaner Ratio Back End Mix NA Reverse  
 Cleaner Ratio Back End Distance NA Combined  
 Buffer RPM: 4 = 720 | 3 = 500 | 2 = 200 | 1 = 50  
 Lanes will be double stripped each morning and  
 lanes will be conditioned one (1) time per day in the  
 morning.



Item	3L-7L:18L-18R	8L-12L:18L-18R	13L-17L:18L-18R	18L-18R:17R-13R	18L-18R:12R-8R	18L-18R:7R-3R
Description	Outside Track:Middle	Middle Track:Middle	Inside Track:Middle	Middle: Inside Track	Middle:Middle Track	Middle:Outside Track
Track Zone Ratio	2.02	1.06	1	1	1.06	2.02

