



2017 ITC Women's Team (SMYRNA)

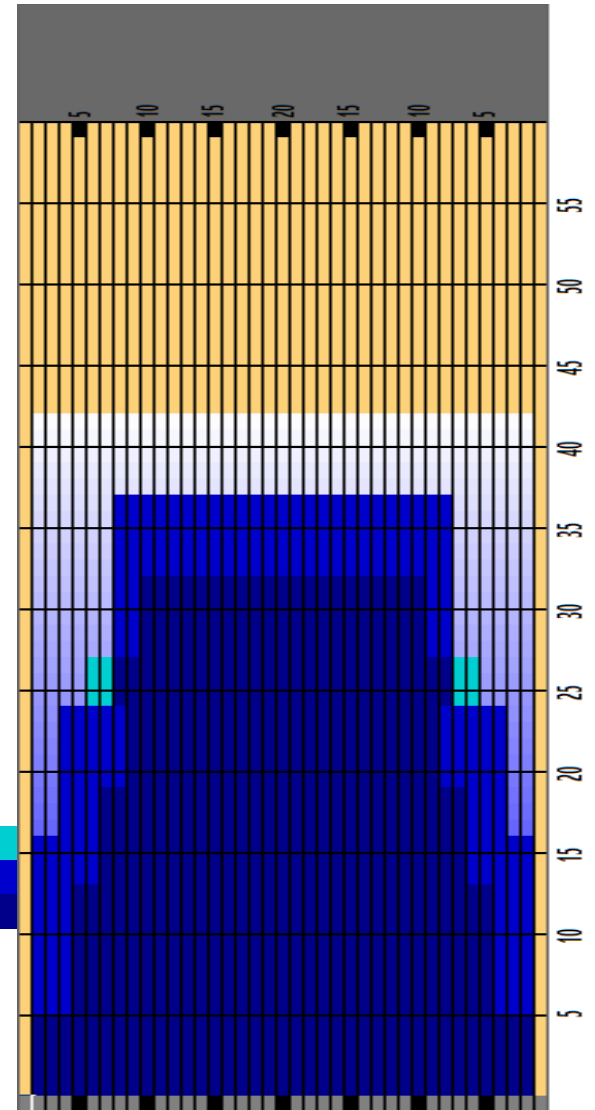


Oil Pattern Distance	42	Reverse Brush Drop	37	Oil Per Board	40 ul
Forward Oil Total	18.8 mL	Reverse Oil Total	8.6 mL	Volume Oil Total	27.4 mL
Tank Configuration	N/A	Tank A Conditioner	FIRE	Tank B Conditioner	FIRE

	START	STOP	LOADS	SPEED	BUFFER	TANK	CROSSED	START	END	FEET	T.OIL
1	2L	2R	4	14	3	A	148	0.0	5.9	5.9	5920
2	5L	5R	4	14	3	A	124	5.9	13.8	7.9	4960
3	7L	7R	3	14	3	A	81	13.8	19.7	5.9	3240
4	9L	9R	2	18	3	A	46	19.7	24.8	5.1	1840
5	6L	6R	1	18	3	A	29	24.8	27.3	2.5	1160
6	10L	10R	2	18	3	A	42	27.3	32.4	5.1	1680
7	2L	2R	0	18	3	A	0	32.4	42.0	9.6	0

	START	STOP	LOADS	SPEED	BUFFER	TANK	CROSSED	START	END	FEET	T.OIL
1	2L	2R	0	30	3	B	0	42.0	37.0	-5.0	0
2	8L	8R	3	30	3	B	75	37.0	24.3	-12.7	3000
3	4L	4R	2	30	3	B	66	24.3	15.8	-8.5	2640
4	2L	2R	2	30	3	B	74	15.8	7.3	-8.5	2960
5	2L	2R	0	10	3	B	0	7.3	0.0	-7.3	0

Cleaner Ratio Main Mix NA Forward
 Cleaner Ratio Back End Mix NA Reverse
 Cleaner Ratio Back End Distance NA Combined
 Buffer RPM: 4 = 720 | 3 = 500 | 2 = 200 | 1 = 50
 Lanes will be double stripped each morning and
 lanes will be conditioned one (1) time per day in the
 morning.



Item	3L-7L:18L-18R	8L-12L:18L-18R	13L-17L:18L-18R	18L-18R:17R-13R	18L-18R:12R-8R	18L-18R:7R-3R
Description	Outside Track:Middle	Middle Track:Middle	Inside Track:Middle	Middle: Inside Track	Middle:Middle Track	Middle:Outside Track
Track Zone Ratio	2.09	1.06	1	1	1.06	2.09

