

FLEX 6 - 2017 Intercollegiate Team Baton Rouge (WOM)

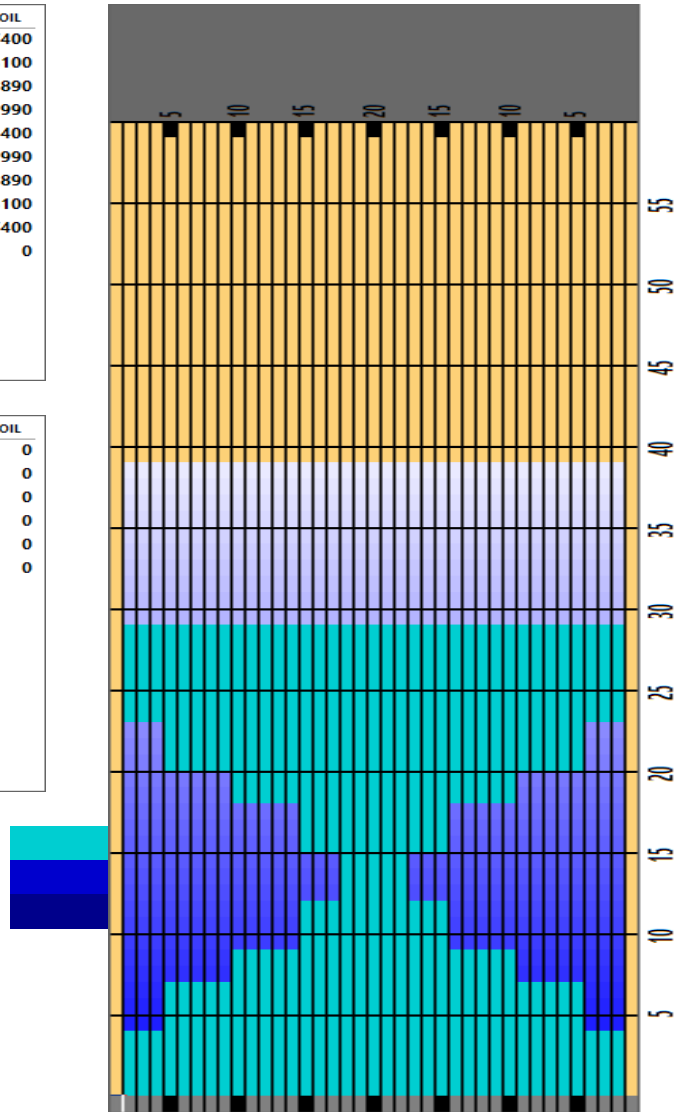


Oil Pattern Distance	39	Reverse Brush Drop	35	Oil Per Board	Multi ul
Forward Oil Total	27.16 mL	Reverse Oil Total	0 mL	Volume Oil Total	27.16 mL
Tank Configuration	N/A	Tank A Conditioner	FIRE	Tank B Conditioner	FIRE

	START	STOP	LOADS	MICS	SPEED	BUFFER	TANK	CROSSED	START	END	FEET	T.OIL
1	2L	2R	4	50	10	3	A	148	0.0	4.2	4.2	7400
2	5L	5R	2	50	10	3	A	62	4.2	7.0	2.8	3100
3	10L	10R	2	45	10	3	A	42	7.0	9.8	2.8	1890
4	15L	15R	2	45	10	3	A	22	9.8	12.6	2.8	990
5	18L	18R	2	40	10	3	A	10	12.6	15.4	2.8	400
6	15L	15R	2	45	10	3	A	22	15.4	18.2	2.8	990
7	10L	10R	2	45	10	3	A	42	18.2	21.0	2.8	1890
8	5L	5R	2	50	10	3	A	62	21.0	23.8	2.8	3100
9	2L	2R	4	50	10	3	A	148	23.8	29.4	5.6	7400
10	2L	2R	0	50	10	3	A	0	29.4	39.0	9.6	0

	START	STOP	LOADS	MICS	SPEED	BUFFER	TANK	CROSSED	START	END	FEET	T.OIL
1	2L	2R	0	50	30	3	B	0	39.0	34.0	-5.0	0
2	2L	2R	0	50	26	3	B	0	34.0	32.0	-2.0	0
3	2L	2R	0	50	22	3	B	0	32.0	26.0	-6.0	0
4	2L	2R	0	50	18	3	B	0	26.0	20.0	-6.0	0
5	2L	2R	0	50	14	3	B	0	20.0	14.0	-6.0	0
6	2L	2R	0	50	10	3	B	0	14.0	0.0	-14.0	0

Cleaner Ratio Main Mix NA Forward
 Cleaner Ratio Back End Mix NA Reverse
 Cleaner Ratio Back End Distance NA Combined
 Buffer RPM: 4 = 720 | 3 = 500 | 2 = 200 | 1 = 50



Item	3L-7L:18L-18R	8L-12L:18L-18R	13L-17L:18L-18R	18L-18R:17R-13R	18L-18R:12R-8R	18L-18R:7R-3R
Description	Outside Track:Middle	Middle Track:Middle	Inside Track:Middle	Middle: Inside Track	Middle:Middle Track	Middle:Outside Track
Track Zone Ratio	2	1.47	1.17	1.17	1.47	2

