

2019 PBA MARSHALL HOLMAN 41



Oil Pattern Distance: **41 Feet** Reverse Brush Drop: **32 Feet** Oil Per Board: **50 uL**
 Forward Oil Total: **17.25 mL** Reverse Oil Total: **13.05 mL** Volume Oil Total: **30.3 mL**
 Forward Boards Crossed: **345 Boards** Reverse Boards Crossed: **261 Boards** Total Boards Crossed: **606 Boards**

| | Start | Stop | Loads | Speed | Crossed | Start | End | Feet | T.Oil |
|---|-------|------|-------|-------|---------|-------|------|------|-------|
| 1 | 2L | 2R | 4 | 14 | 148 | 0.0 | 5.9 | 5.9 | 7400 |
| 2 | 4L | 4R | 1 | 14 | 33 | 5.9 | 7.8 | 1.9 | 1650 |
| 3 | 6L | 6R | 1 | 18 | 29 | 7.8 | 10.3 | 2.5 | 1450 |
| 4 | 8L | 8R | 1 | 18 | 25 | 10.3 | 12.8 | 2.5 | 1250 |
| 5 | 10L | 9R | 2 | 18 | 44 | 12.8 | 17.9 | 5.1 | 2200 |
| 6 | 12L | 11R | 2 | 18 | 36 | 17.9 | 23.0 | 5.1 | 1800 |
| 7 | 13L | 13R | 2 | 22 | 30 | 23.0 | 29.2 | 6.2 | 1500 |
| 8 | 2L | 2R | 0 | 22 | 0 | 29.2 | 38.0 | 8.8 | 0 |
| 9 | 2L | 2R | 0 | 30 | 0 | 38.0 | 41.0 | 3.0 | 0 |

Navigation: Forward Reverse More

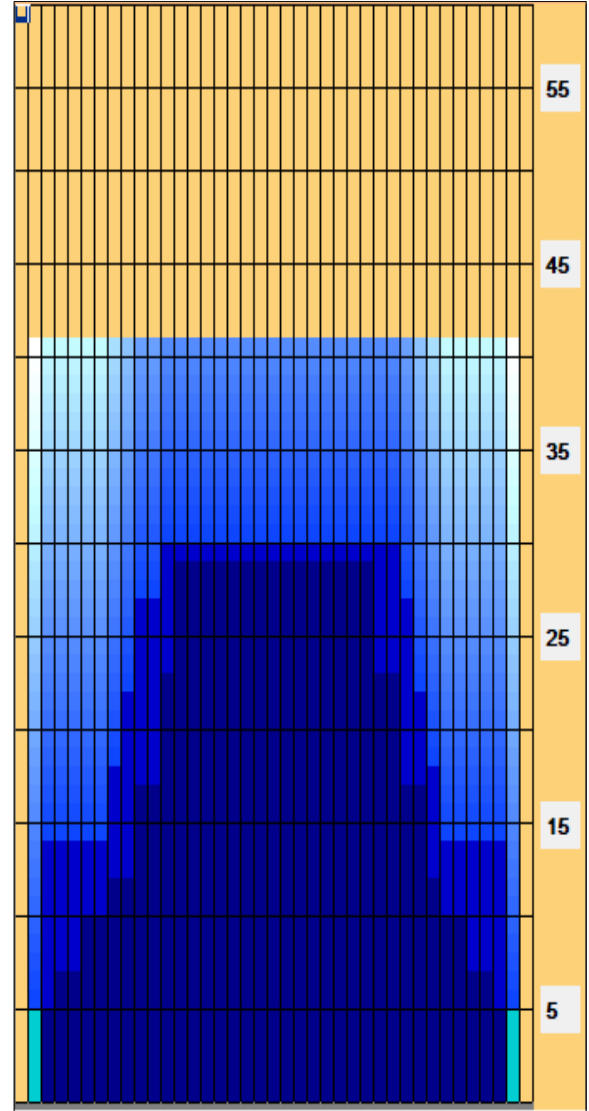
| | Start | Stop | Loads | Speed | Crossed | Start | End | Feet | T.Oil |
|---|-------|------|-------|-------|---------|-------|------|-------|-------|
| 1 | 2L | 2R | 0 | 22 | 0 | 41.0 | 30.0 | -11.0 | 0 |
| 2 | 12L | 11R | 1 | 22 | 18 | 30.0 | 26.9 | -3.1 | 900 |
| 3 | 10L | 10R | 2 | 18 | 42 | 26.9 | 21.8 | -5.1 | 2100 |
| 4 | 9L | 9R | 2 | 14 | 46 | 21.8 | 17.9 | -3.9 | 2300 |
| 5 | 8L | 8R | 2 | 14 | 50 | 17.9 | 14.0 | -3.9 | 2500 |
| 6 | 3L | 3R | 3 | 14 | 105 | 14.0 | 8.1 | -5.9 | 5250 |
| 7 | 2L | 2R | 0 | 14 | 0 | 8.1 | 0.0 | -8.1 | 0 |

Navigation: Forward Reverse More

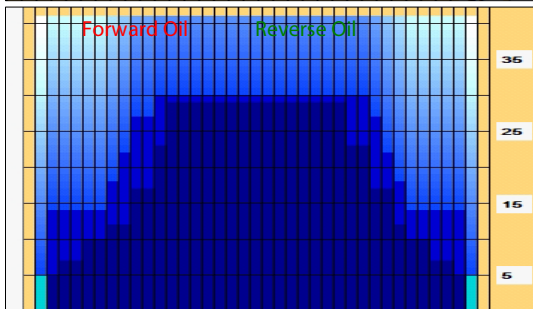
Conditioner:
Type In or Select
One

TransferType:
Type In or Select
One

- Forward
- Reverse
- Combined
- Buff



| | | | | | | | | | |
|---|-----|-----|---|----|----|------|------|------|------|
| 2 | 12L | 11R | 1 | 22 | 18 | 30.0 | 26.9 | -3.1 | 900 |
| 3 | 10L | 10R | 2 | 18 | 42 | 26.9 | 21.8 | -5.1 | 2100 |
| 4 | 9L | 9R | 2 | 14 | 46 | 21.8 | 17.9 | -3.9 | 2300 |
| 5 | 8L | 8R | 2 | 14 | 50 | 17.9 | 14.0 | -3.9 | 2500 |



Navigation: Forward Reverse More

Graph Colors

- Forward Oil
- Reverse Oil
- Combined Oil
- Buff Area

Notes